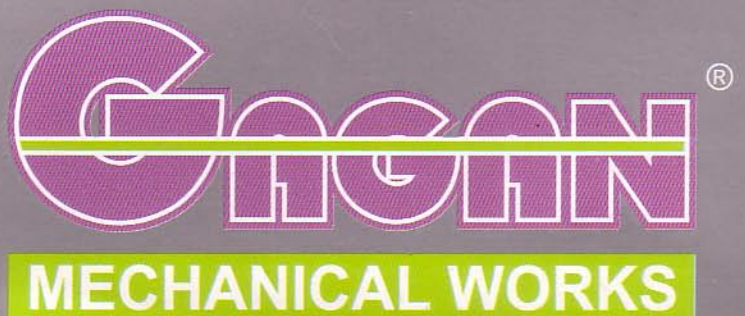


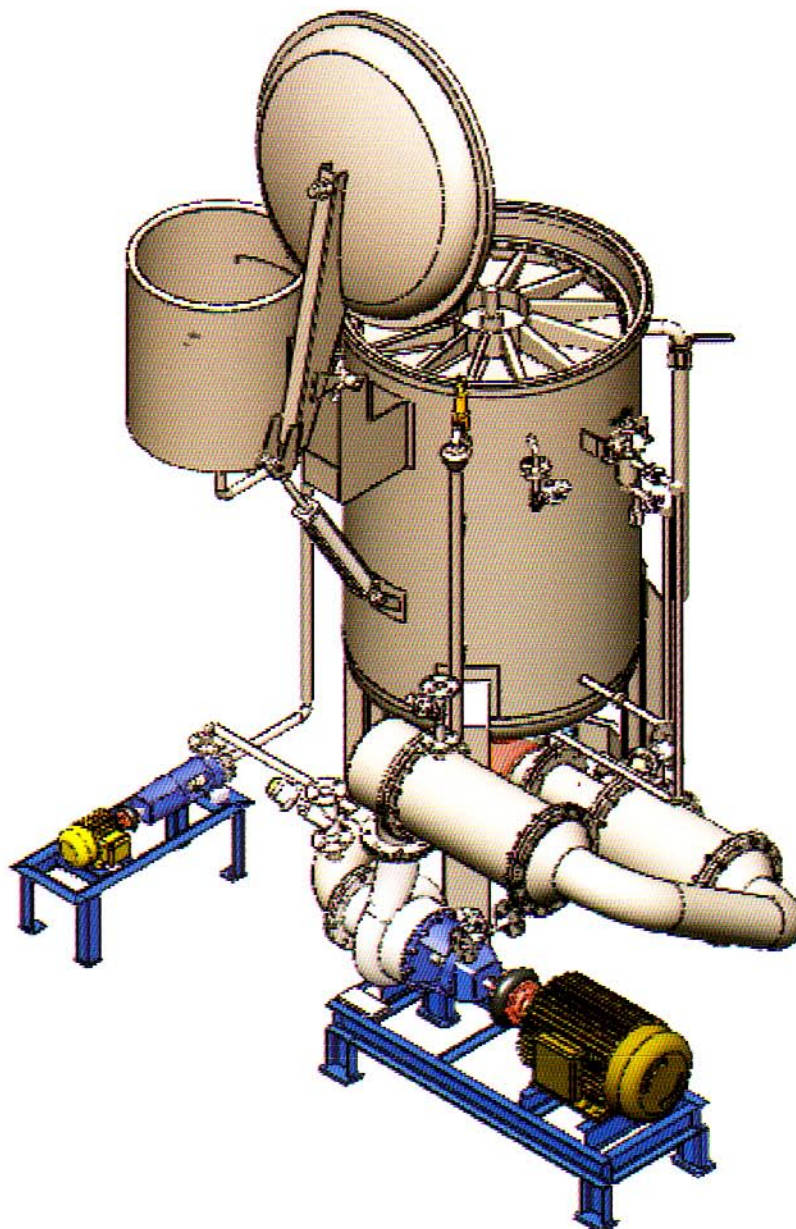


HTHP Package Dyeing Machine



GMW-CD High Temperature and Pressure Package Dyeing Machine :-

The important factors in dyeing is to achieve even dyeing, shade and colour fastness and at the same time bearing in mind the importance of operating costs. All these features are covered by GMW-CD yarn package dyeing machine.



ADVANTAGES OF GMW-CD :-

Multiple Dyeing Options:-

The GMW -CD can be used to process natural and synthetic fiber (100% Cotton, Polyester, Poly/Cotton, Acrylic, and Nylon, woolen ,etc)and their blends in the form of yarn packages ,warp beams loose fiber or stock, tops, ribbons and tapes.

Low Liquor Ratio:-

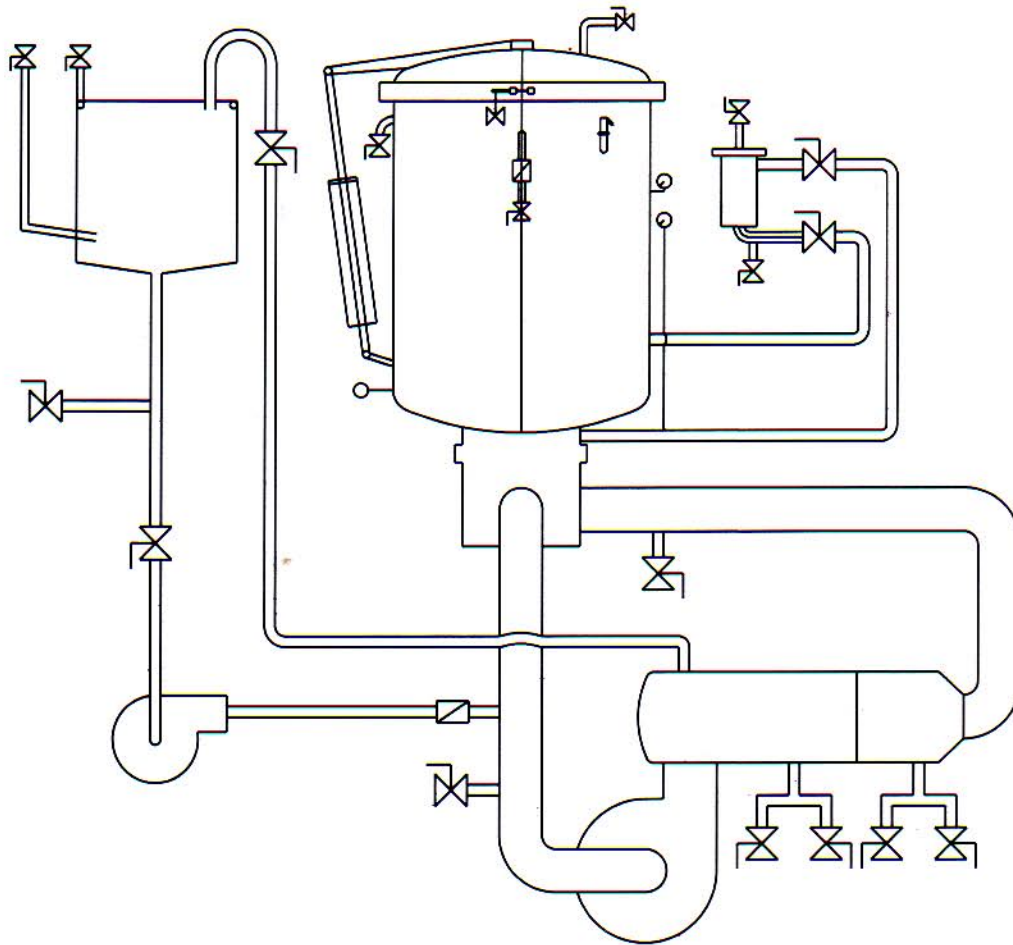
The machine is equipped with specially designed heat exchanger rather than the steam coil inside the vessel and is positioned in the circulation with positive effect on the liquor ratio, hence any formand type of martial can be dyed effectively from 3-5: 1 to 7-8:1.

Airpad Pressurization:-

For liquor expansion, the machine is equipped with an airpad system which occupies approx 20%-25% of internal volume which can be created by external compressed air or nitrogen. It helps provide constant liquor ratio during variable loading.

Quick & Level Dyeing :-

The machine pump gives high liquor flow with adjustable flow rate and stepless increase in the differential pressure regulated by the A/C drive (Inverter) which allows gentle flow for sensitive articles and higher flow rate and differential pressure for denser compressed packages and warp beams .Flow reversal without



delayed time increases number of circulations to guarantee shade levelness.

Quick Unloading Carrier :-

GMW -CD has a specially designed quick unloading carrier for easy and quick unloading thus reduces labour work.

Power Saving :-

A/C drive (Inverter) driven pump not only provides variable flow control but saves power consumption during start up as well reduces overall load.

Silent Features :-

- ★ High efficient. Circulation Pump & Injector Pump with Electric Motors.
- ★ Reverse & Forward system with pneumatic operated cylinder.
- ★ Programmed Panel Board with Microprocessor.
- ★ Digital Temperature Indicator.
- ★ chemical dosing tank provided with direct steam and washing device.

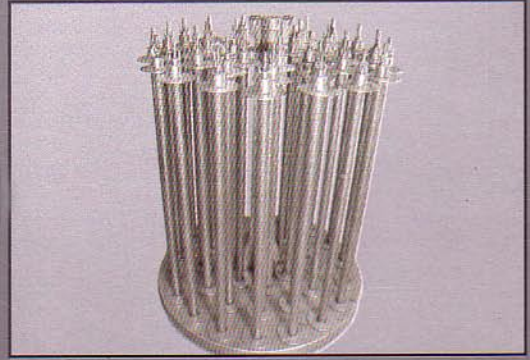
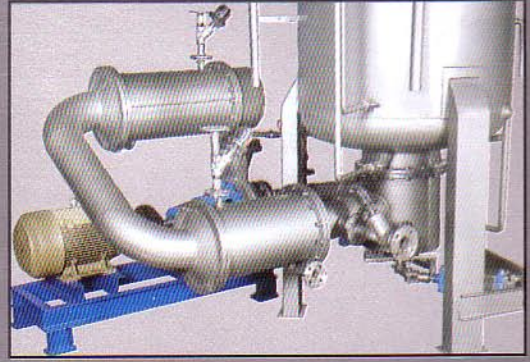
- ★ Pneumatic operated S.S. Valve for Heating & Cooling, Filling, Drain and overflow.
- ★ Pneumatic operated S.S. Valves for pressure and de-pressure with pressure switch.
- ★ High quality pressure gauge (2 no), pressure & vacuum relief valves for extreme safety.
- ★ Specially designed steam coil for quick heating.
- ★ Pneumatic operated machine door for hassle free operation.
- ★ S.S. electrical control Panel Board.

Safety Factors :-

- (a) Safety Valve
- (b) Rapture Disc
- (c) Vacuum Valve
- (d) High Pressure temperature alarm.
- (e) Low Pressure Switch
- (f) High Pressure Switch
- (g) Safety Temperature switch-lid safety
- (h) Residual pressure switch -lid safety

Optional Extra

- Equal capacity stock tank with direct leaching & washing facilities.
- Different types of carriers such as beams, loose fiber, cans, basket, and zipper & tapes etc.
- High temperature drain. "
- Double fill & drain.
- Quick unloading basket for package cone carriers.
- Flexible loading spindle with accessories.
- Carrier's accessories such as : SLIPON cone, tubes, triangular and perforated spindles, nuts, plats, spacers etc.
- Full Automation with pc-based controller.
 - (1) Continuous level transmitter
 - (2) Automatic drain
 - (3) Controlling heating & cooling phase
 - (4) Continuous washing.
 - (5) Operator calling signals at the cycle end and unities failure alarm.
 - (6) Controls all electro-pneumatic Valves.
 - (7) Controls level & temperature Probes.
 - (8) Controls chemical preparation tank & dosing pump.
 - (9) Operator safety inter locks.
 - (10) Operator warnings.



Technical Data

- Max. working pressure : 5.2 bar
- Max. working temperature : 140°C
- Heating gradient : 25°C~130°C approx. 5°C/min.
(dry saturated steam pressure at 7 bar)
- Cooling gradient : 130°C~85°C approx. 3.5°C/min..
(Cooling water at 3 bar. 25°C)



AN ISO 9001 : 2000
CERTIFIED COMPANY

GAGAN[®] **MECHANICAL WORKS**

C-239, Phase VIII, Focal Point, Chandigarh Road, Ludhiana (Pb.) INDIA
Tel.: + 91-161- 2673355, 2673322, Fax : +91-161-2678622
E-mail : gagan@dyeingmachines.com, Website : www.dyeingmachines.com